

From the following documents you will be able to obtain the technical information necessary for the graphic design of each single printing component. The layout in the way you send it to us is expected to be ready for direct processing without any further correcting.

A delivery of data that is not according our specifications can delay your order and cause correction costs. Attention to these production guidelines should secure you the optimum results and simplify our co-operative work.

We can accept data from the following layout/image editing software and graphic programs:

- Adobe®PhotoShop,
- Adobe®Indesign,
- Adobe®Illustrator,
- Macromedia®Freehand und
- Quark Xpress 6.5
- or printable pdfs as Adobe®Acrobat PDF.

For each one we work with the currently available program versions Mac OSX CS3 and CS4 and also Adobe® Acrobat 9. We always need from you:

- A montage of your data in a layout program in according the current specifications.
- All fonts that are used in the document inasmuch as they are not embedded or have been converted. We categorically assume that you are in possession of all necessary font licenses.
- All used images with a minimum resolution of:
 - line drawings: 1200 dpi
 - grey-scale images: 300 dpi
- maximum whole colour application: **350%** for any kind of covers gatefoldsleeves discobags, **400%** for vinyllabels.
- colour profile: ISOcoated_v2_eci.icc

When delivering RGB Image data during the necessary converting in the CMYK range of colours colour variation to the original image occurs. Therefore please save colour images in CMYK - modus as standard practice.

TIFF: Save TIFF Image data without compression (LZW or similar)

EPS: Binary coded

JPEG: Please save with maximum quality in CMYK modus

Please notice that Photoshop images must be mounted in an appropriate layout program. (In case we receive only Photoshop-files (e.g. tiffs jpgs...) we have to import those files into a layout program causing extra costs for you.) Take care that the positioning of your image data in the appropriate layout program has been done with paying attention to the necessary bleed (normally 3 mm). The size of your montage page must be identical to the size of the format which has to be printed. Therefore mount your data without any additional white area, no crop- or registermarks. Upon request we can send you templates in various layout programs!

Line widths

All line widths must not lie under a minimum size:

- Positive print min. 0,10 mm
- Negative print min. 0,15 mm

Font sizes

Font size must not fall short of a minimum size:

- Positive print min. 4 pt
- Negative print min. 5 pt

Please note that with the use of serifs fonts and with particular font incisions, you must stay within the minimum line widths! Please only use postscript compatible font types.

Take for instance in this case the printing of the 12 inch Label. Here it would be necessary to layout a format of 100 x 100 mm for each label side. On top of that a bleed of 3 mm all around must be taken into account on the data layout. This means the printed image must show a total size of 106 mm. When generating a PDF, it should be noted that the PDF format should match the actual format including the bleed which in this case is 106 mm. Therefore there should be no registration marks at all on the PDF. Removal of these would lead to additional time and therefore extra costs!

Generally we produce your printed matter by CTP (computer to plate) and don't produce films anymore. That is why it is absolutely necessary that you **exactly stick to the specifications** of the **relevant pressing plant**. Our Graphics department will help you with any questions as refers this matter.

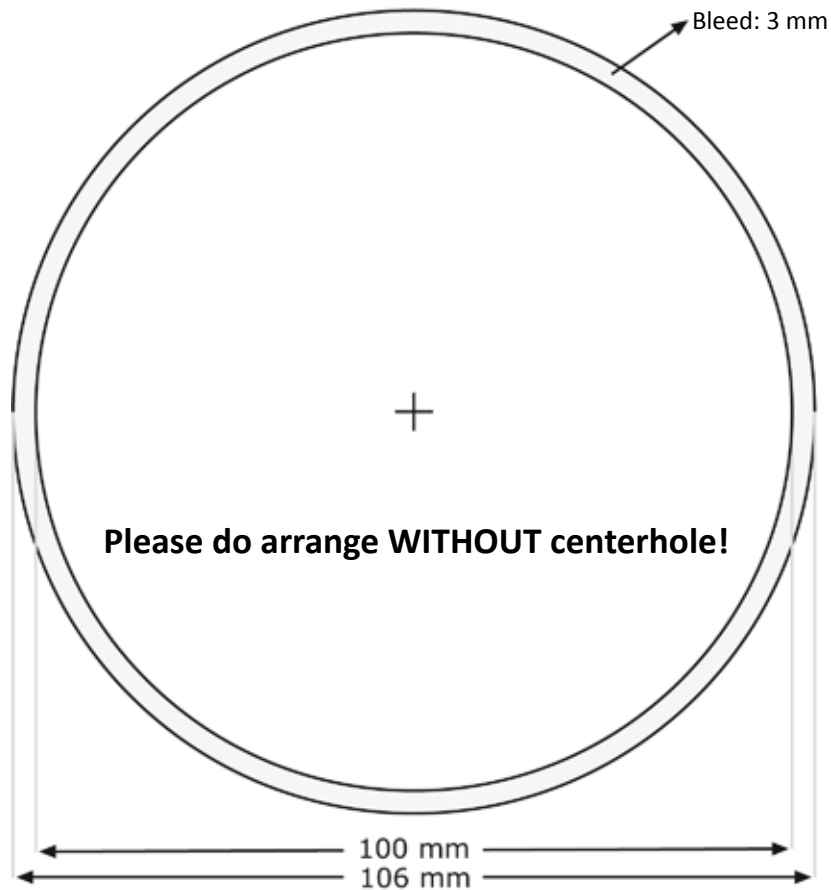
With delivery of compressed data, necessary intervention of the data that is to be developed, or by delivery of incomplete data, additional outlays will be calculated by the appropriate hourly rate.

In normal cases we receive from you the correct document according the specifications. After receiving your data we check if it has been arranged according the specifications and generate high resolution PDF documents. These PDF's or the pdfs you send us are then forwarded to the relevant pressing plant. Should it turn out in this process that problems need to be solved, you will receive a response, at which point you have the possibility of sending us new data or requesting that we do (if possible) the necessary work. The expenditure of time will then be shown separately in the invoice/bill. Sending printing files repeatedly to the printing agencies is connected with extra work for them and consequently extra costs for you.

In general the printing will be done by an **industrial printing process** connected with the usual color permissible limits according **European ISO standard**. To guarantee a certain color accuracy it's unalterable to sent digital proofs that follow the present valid **FOGRA-standards/settings**. It's possible that we do these digital proofs for you.

For security reasons you should only send copies of the data carrier and not the originals!

Specifications LP Label 10/12''



Format: 100 x 100 mm - each Side

Bleed: 3 mm - all around

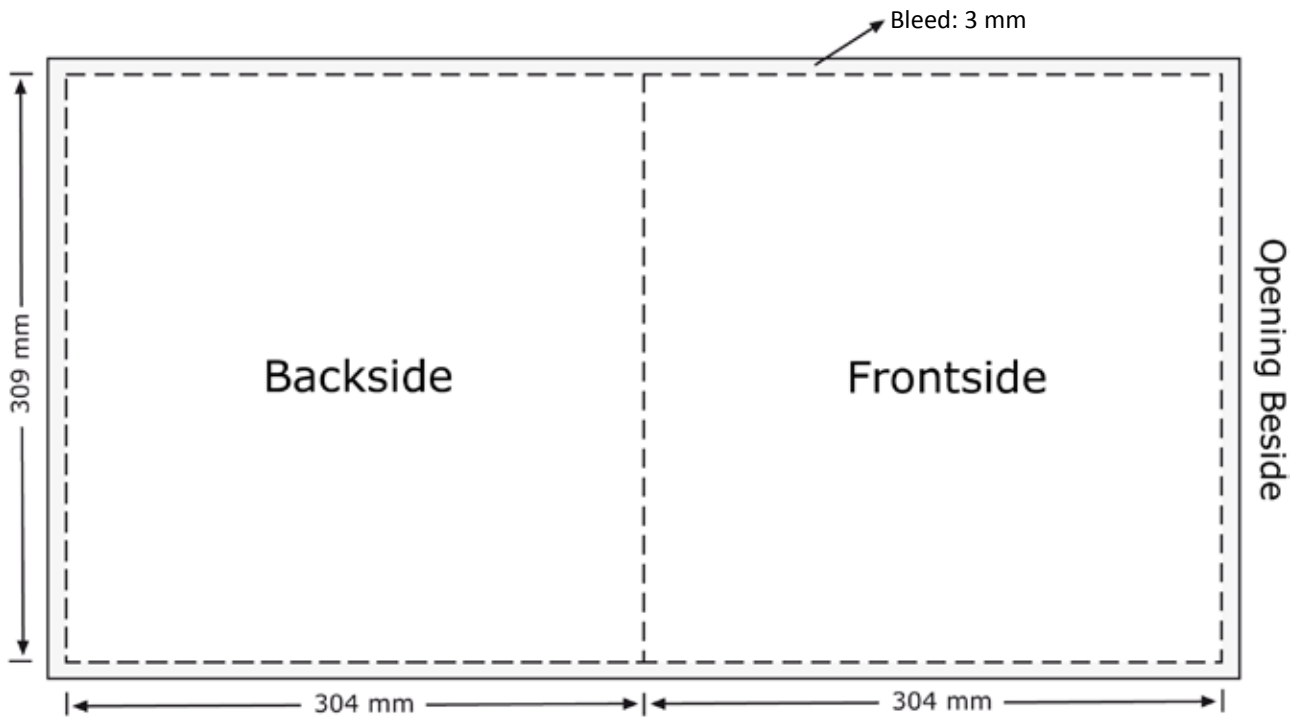
Please put each label on a separate document!

Document size: 100 x 100 mm

Incl. Bleed: 106 x 106 mm

PDF-Size: 106 x 106 mm

Specifications LP Inner Sleeve



Format: 608 x 309 mm

Bleed: 3 mm

Pages: 1

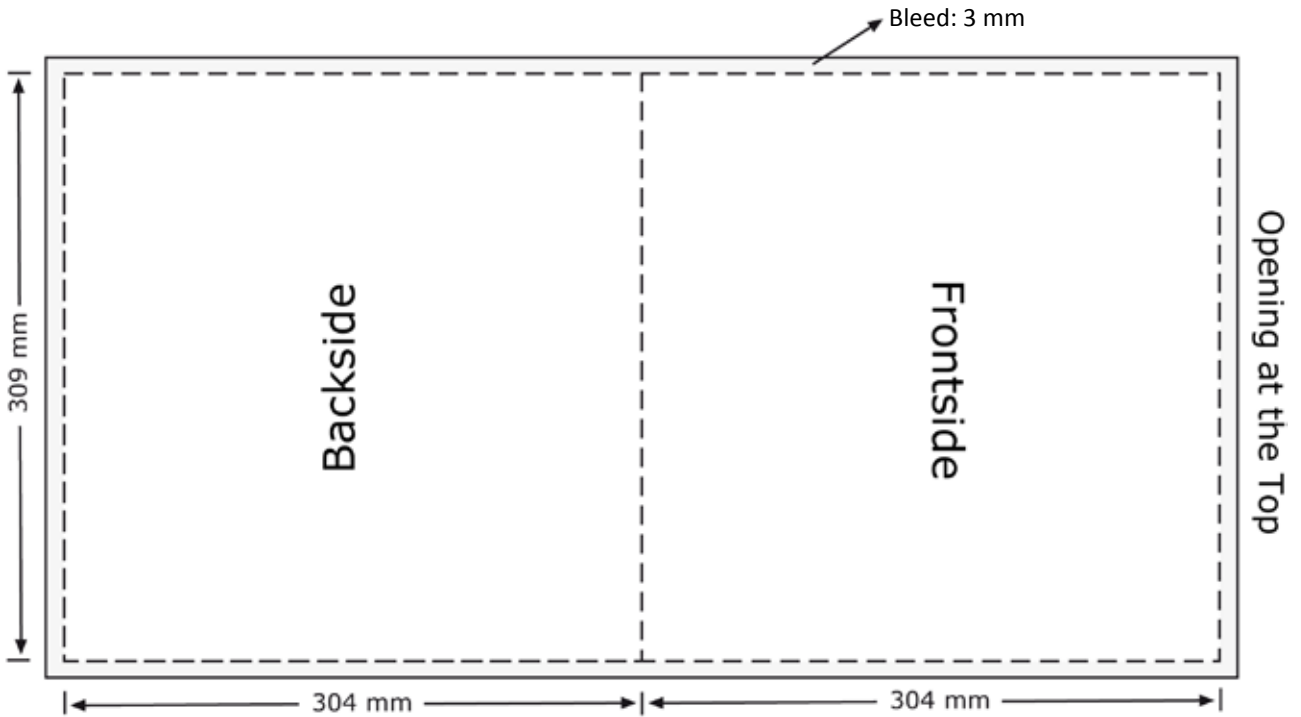


Document size: 608 x 309 mm

Incl. Bleed: 614 x 315 mm

PDF-Size: 614 x 315 mm

Specifications LP Inner Sleeve 2



Format: 608 x 309 mm

Bleed: 3 mm

Pages: 1

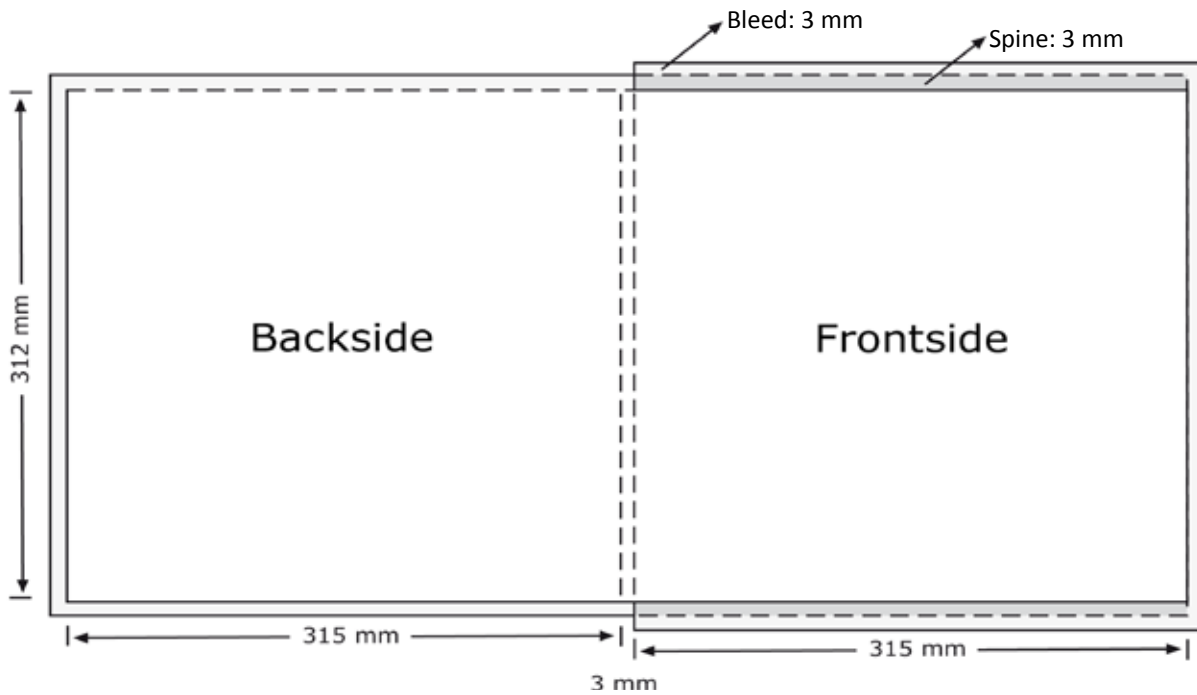


Document size: 608 x 309 mm

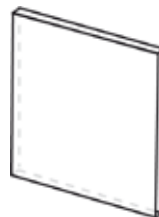
Incl. Bleed: 614 x 315 mm

PDF-Size: 614 x 315 mm

Specifications LP Cover 3 mm

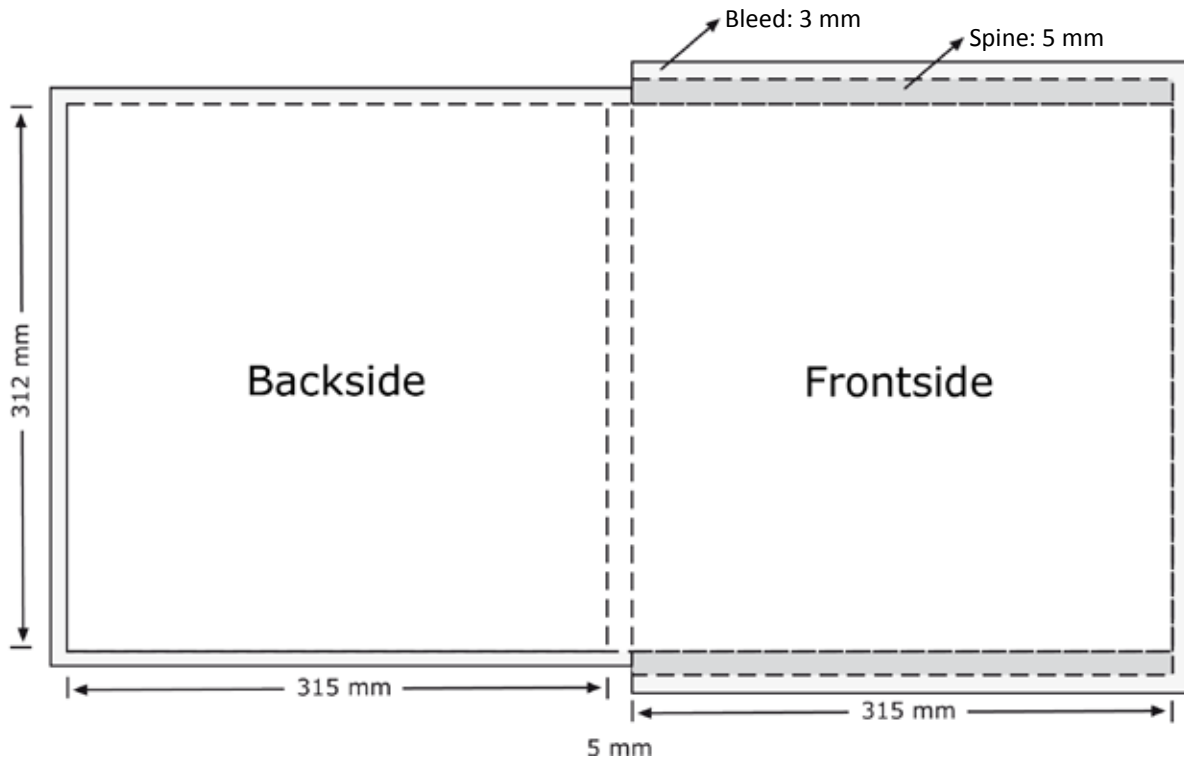


Format: 633 x 312 mm
Bleed: 3 mm



Documentsize: 633 x 318 mm
Incl. Bleed: 639 x 324 mm
PDF-Size: 639 x 324 mm

Specifications LP Cover 5 mm

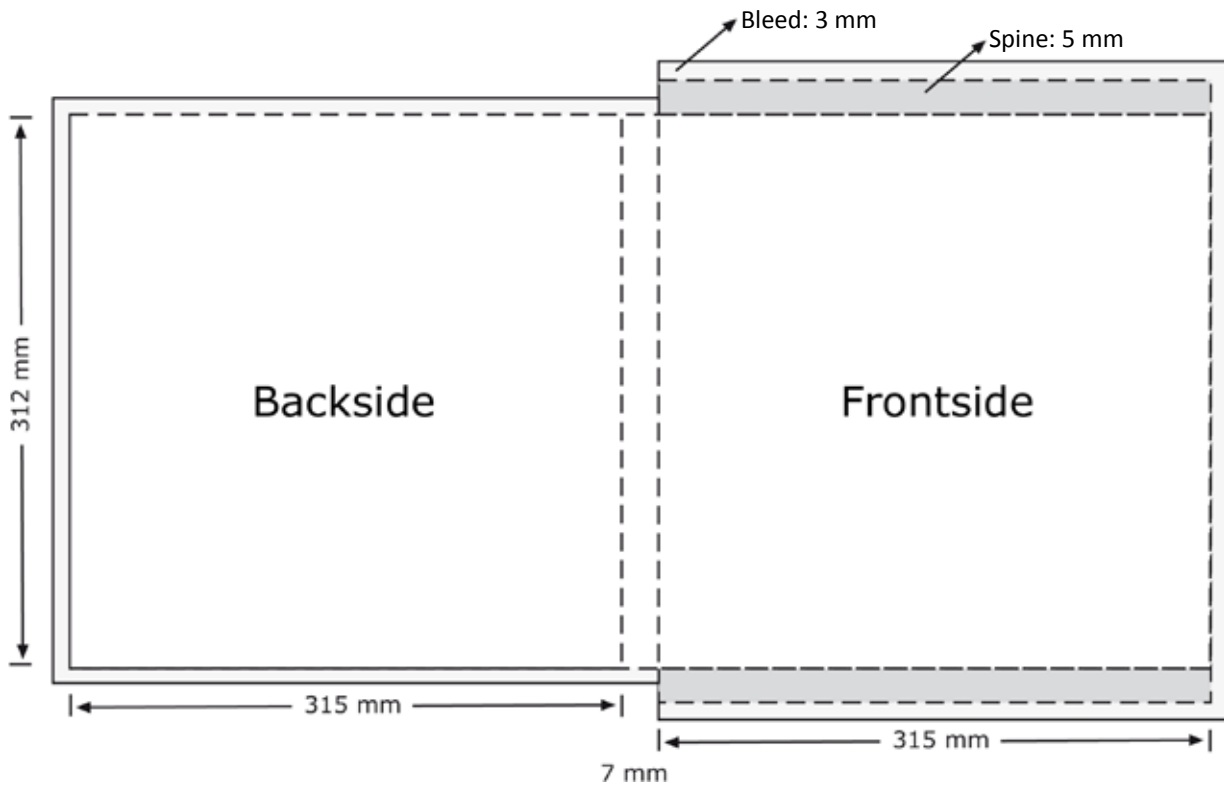


Format: 635 x 312 mm
Bleed: 3 mm



Documentsize: 635 x 322 mm
Incl. Bleed: 641 x 328 mm
PDF-Size: 641 x 328 mm

Specifications LP Cover 7 mm

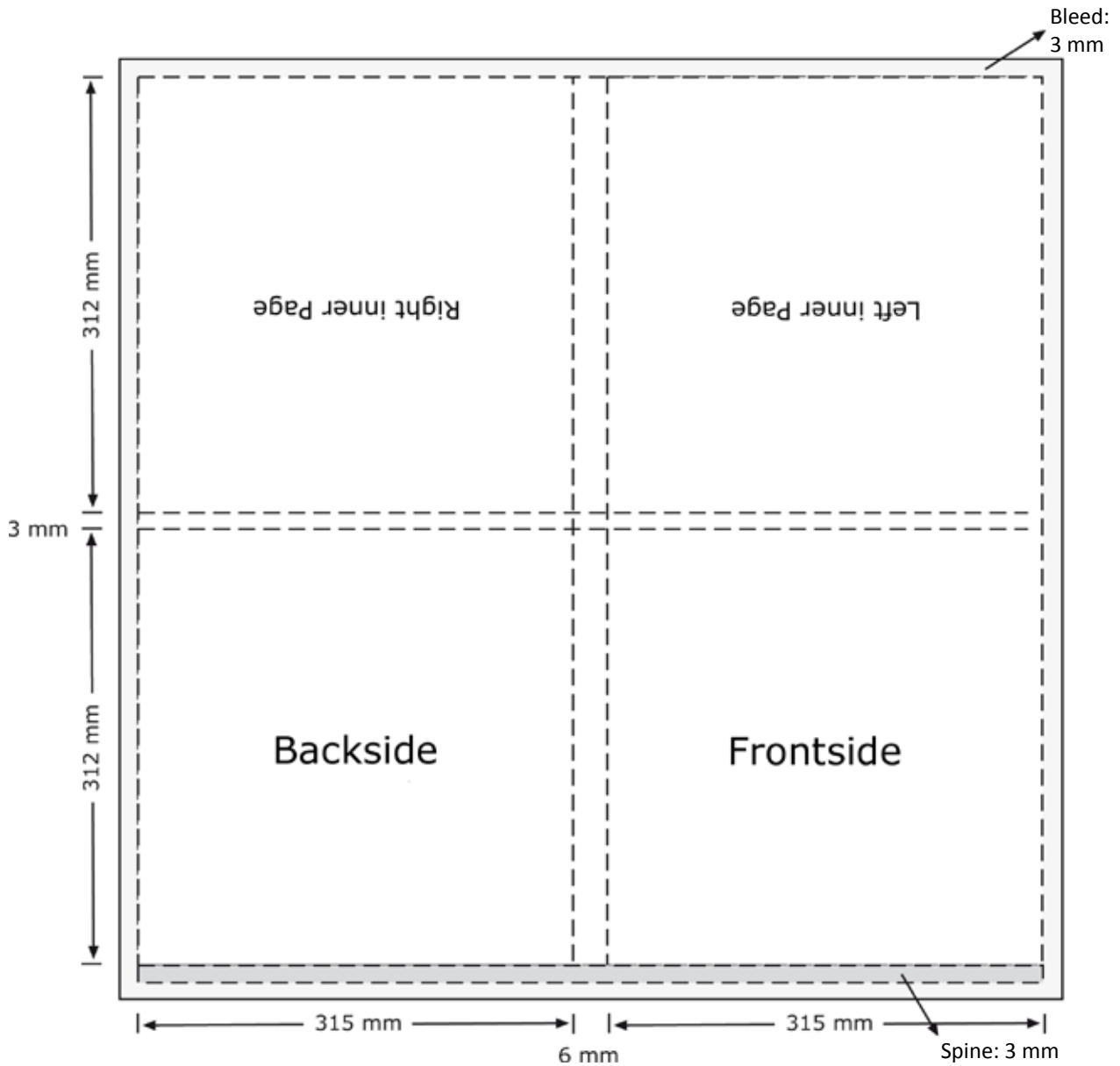


Format: 637 x 312 mm
Bleed: 3 mm



Documentsize: 637 x 326 mm
Incl. Bleed: 643 x 332 mm
PDF-Size: 643 x 332 mm

Specifications LP Album Cover 6 mm



Format: 636 x 627 mm

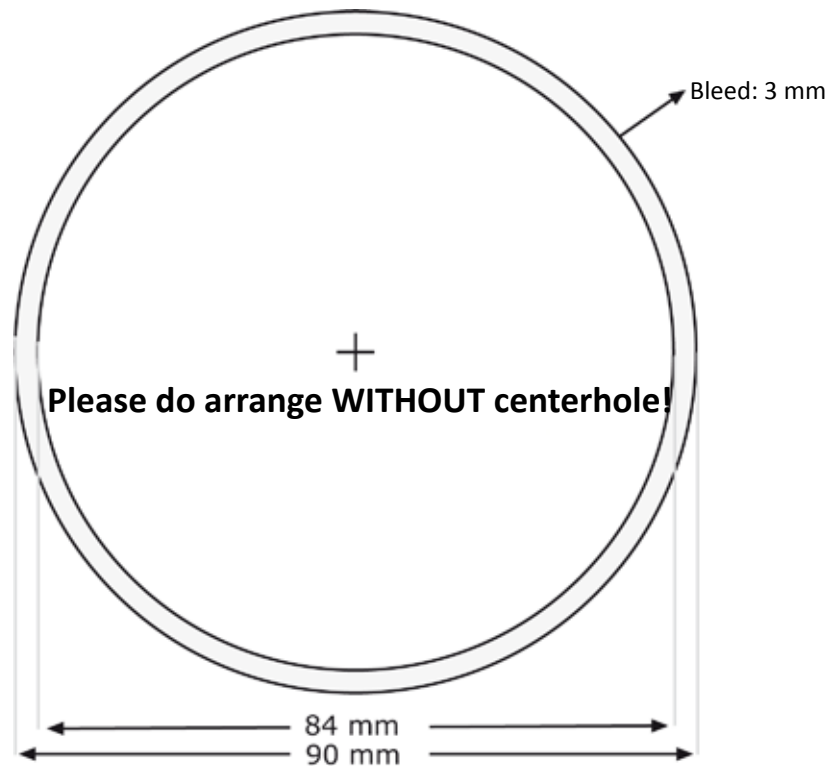
Bleed: 3 mm

Document size: 636 x 630 mm

Incl. Bleed: 642 x 636 mm

PDF-Size: 642 x 636 mm

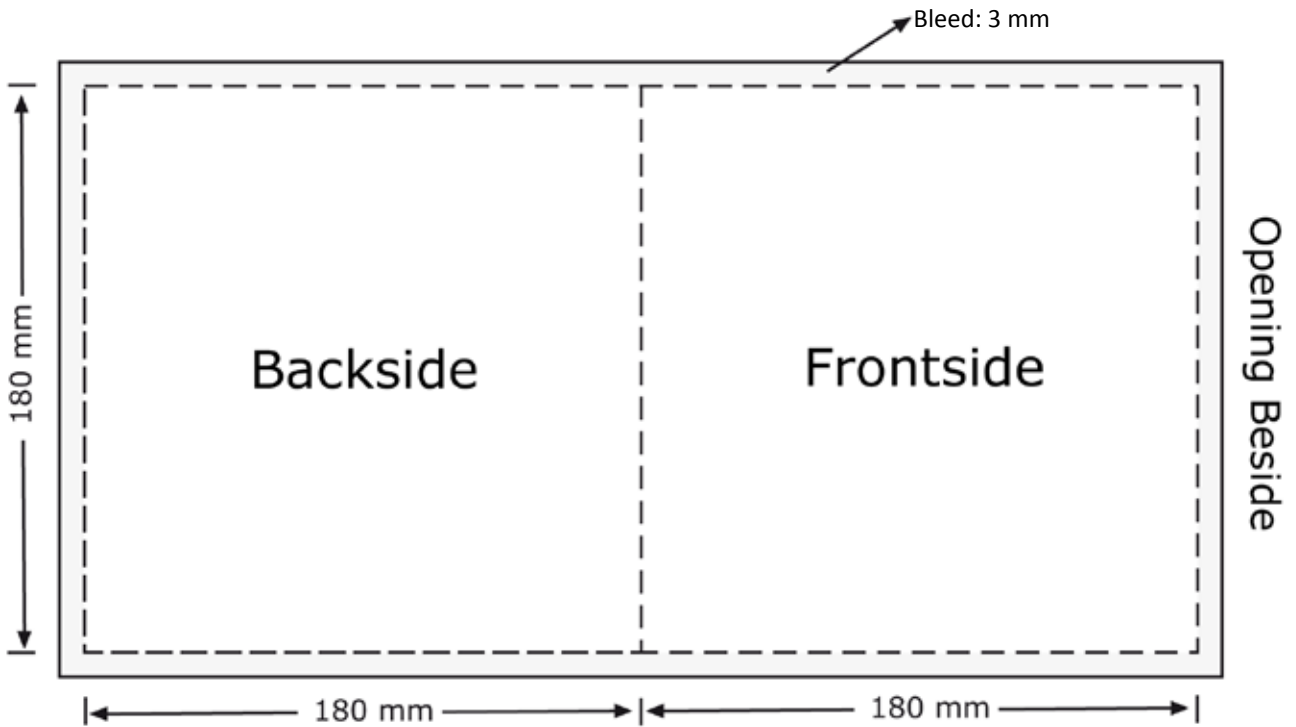
Specifications Label 7"



Format: 84 x 84 mm
Bleed: 3 mm - all around

Document size: 84 x 84 mm
Incl. Bleed: 90 x 90 mm
PDF-Size: 90 x 90 mm

Specifications 7" Cover (275g)

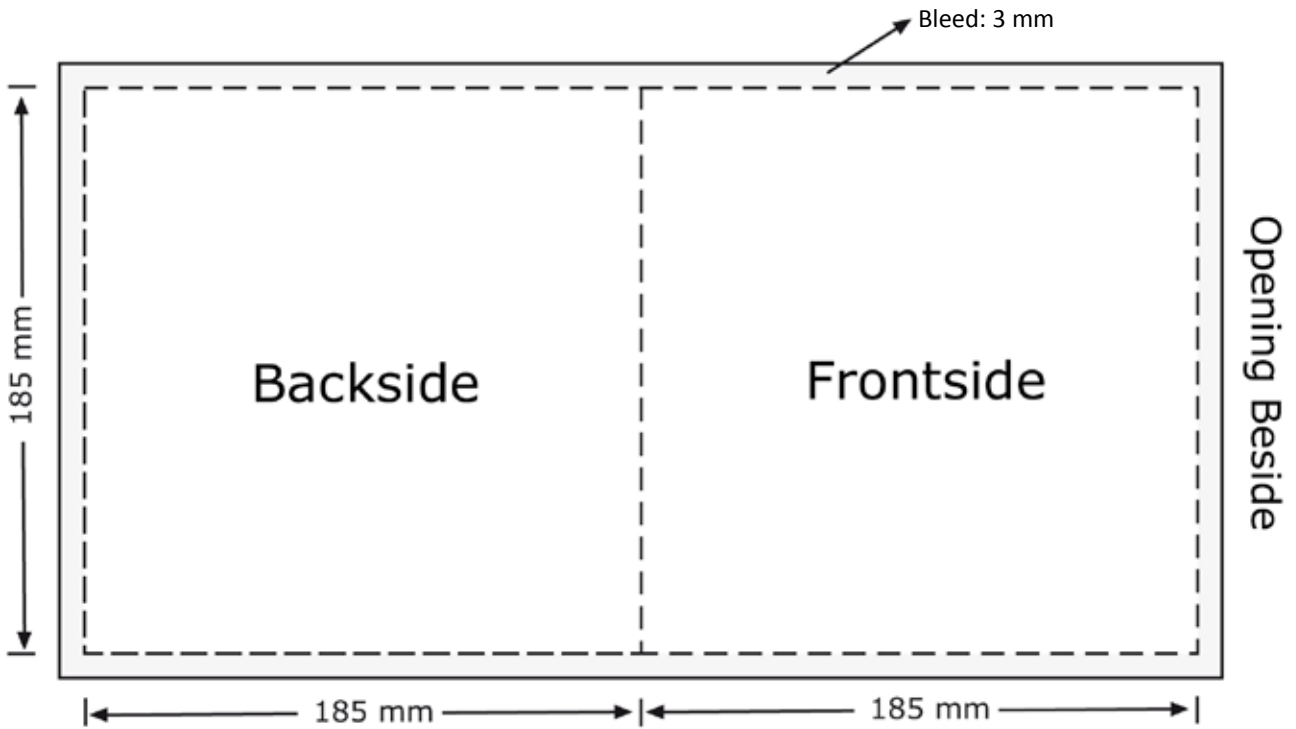


Format: 360 x 180 mm
Bleed: 3 mm
Pages: 1



Document size: 360 x 180 mm
Incl. Bleed: 366 x 186 mm
PDF-Size: 366 x 186 mm

Specifications 7" Cover
(275g with additional innersleeve)

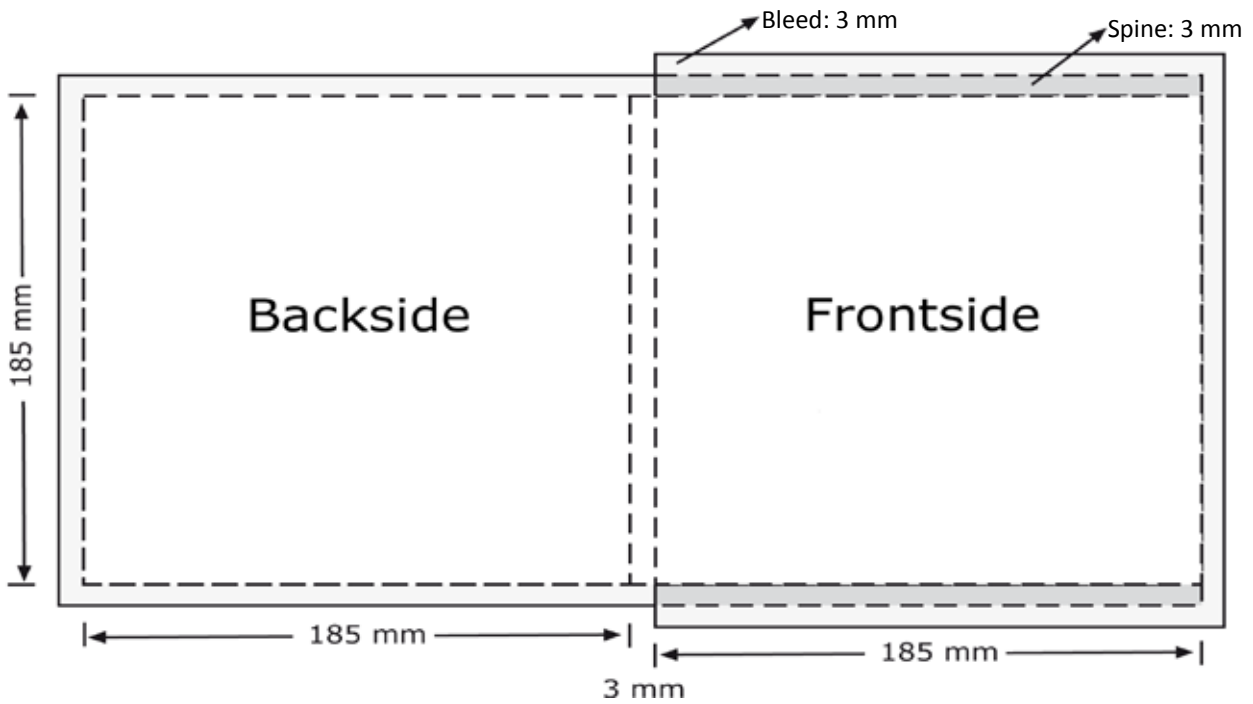


Format: 370 x 185 mm
Bleed: 3 mm
Pages: 1



Document size: 370 x 185 mm
Incl. Bleed: 376 x 191 mm
PDF-Size: 376 x 191 mm

Specifications 7" Cover 3 mm

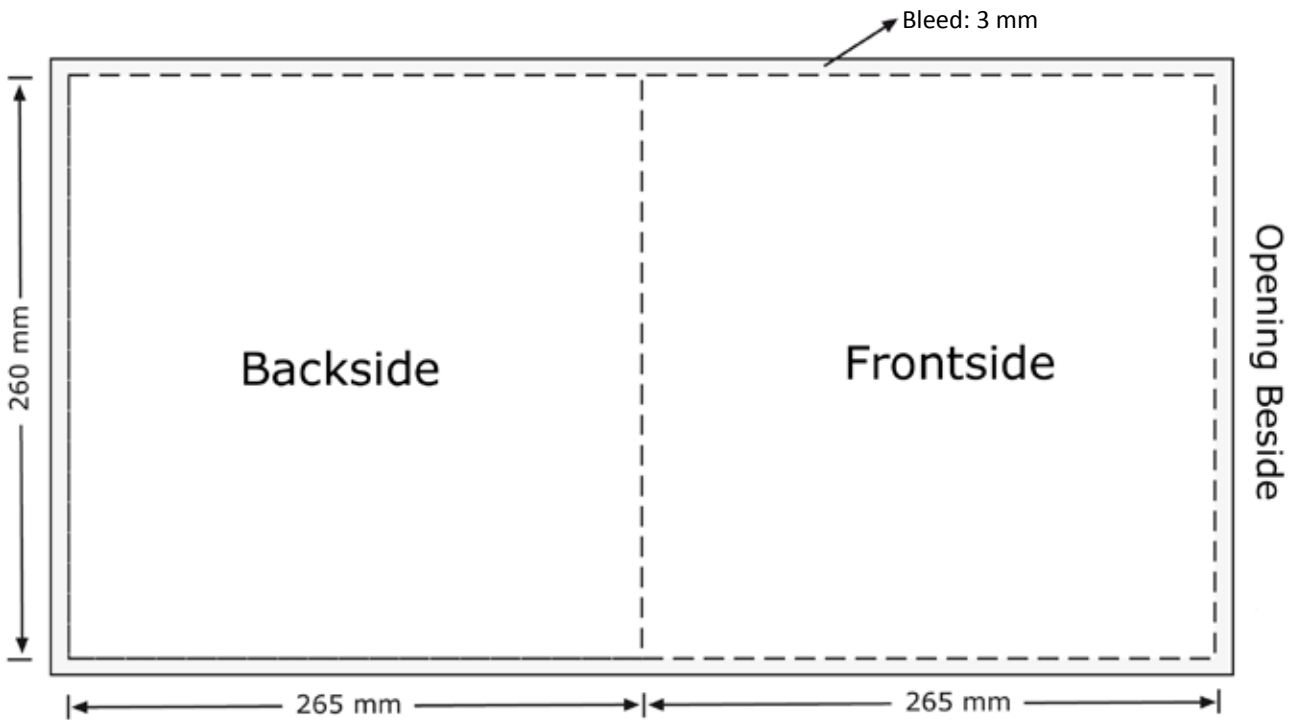


Format: 373 x 185 mm
Bleed: 3 mm



Documentsize: 373 x 191 mm
Incl. Bleed: 379 x 197 mm
PDF-Size: 379 x 197 mm

Specifications 10 inch Discobag



Format: 530 x 260 mm

Bleed: 3 mm

Pages: 1

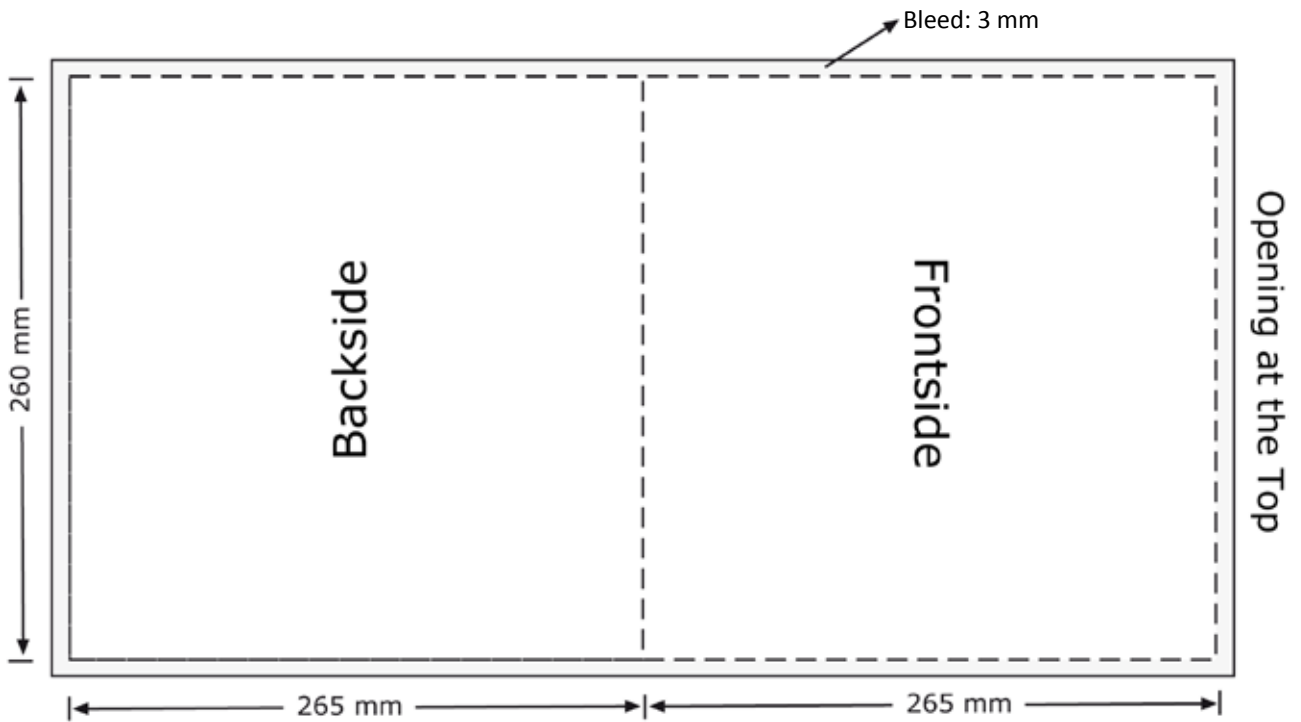


Document size: 530 x 260 mm

Incl. Bleed: 536 x 266 mm

PDF-Size: 536 x 266 mm

Specifications 10 inch Discobag 2



Format: 530 x 260 mm

Bleed: 3 mm

Pages: 1

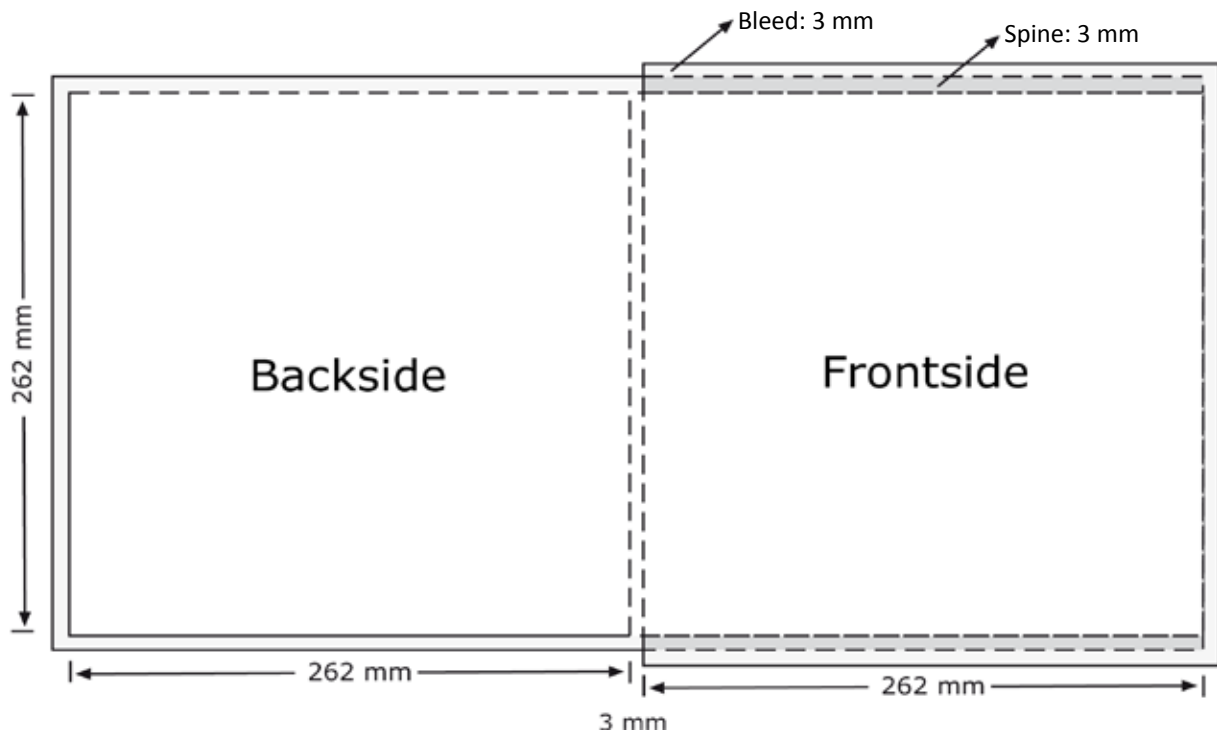


Document size: 530 x 260 mm

Incl. Bleed: 536 x 266 mm

PDF-Size: 536 x 266 mm

Specifications 10 inch 3 mm Cover



Format: 527 x 262 mm

Bleed: 3 mm

Pages: 1

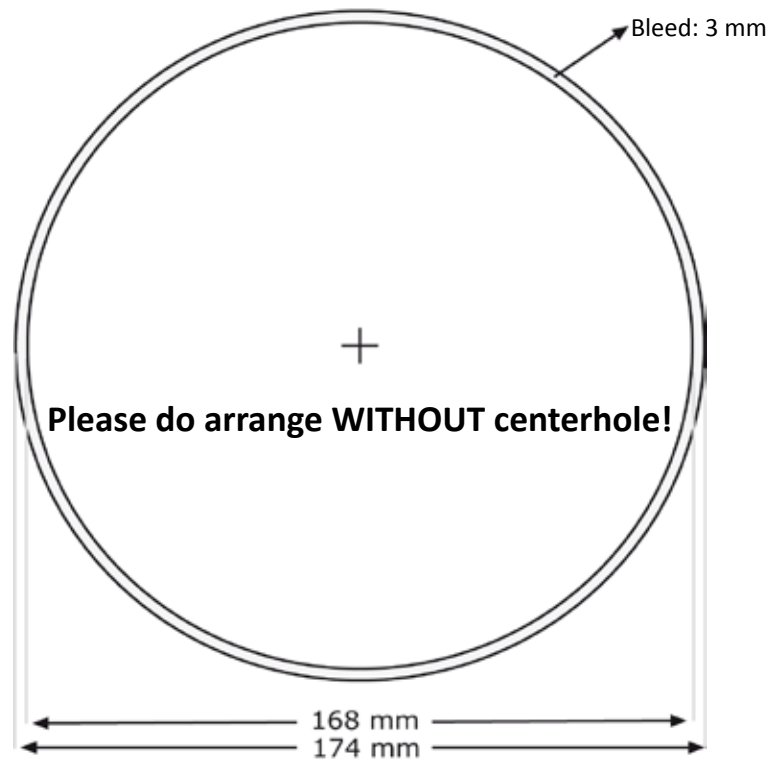


Document size: 527 x 268 mm

Incl. Bleed: 533 x 274 mm

PDF-Size: 533 x 274 mm

Specifications Picture LP 7"



Format: 168 x 168 mm

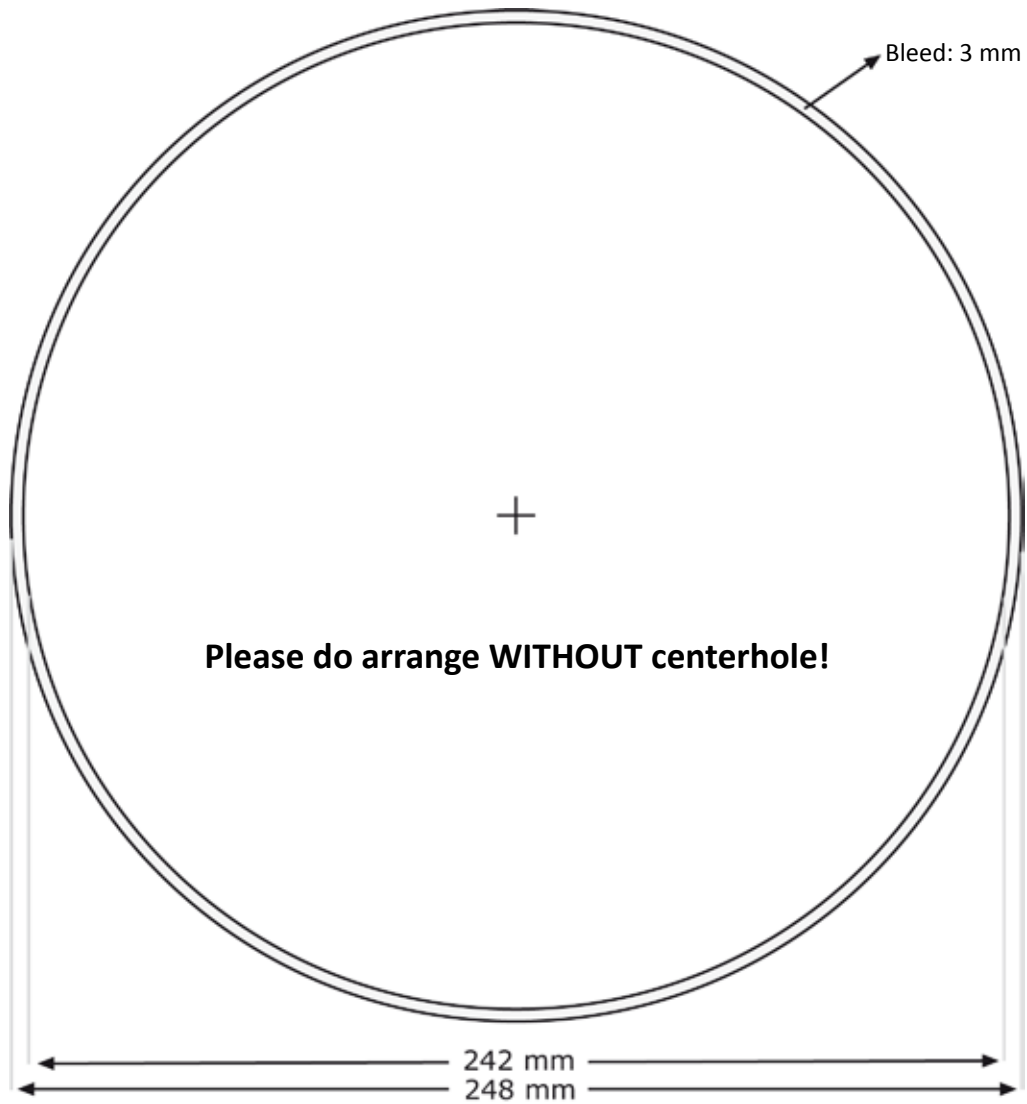
Bleed: 3 mm

Document size: 168 x 168 mm

Incl. Bleed: 174 x 174 mm

PDF-Size: 174 x 174 mm

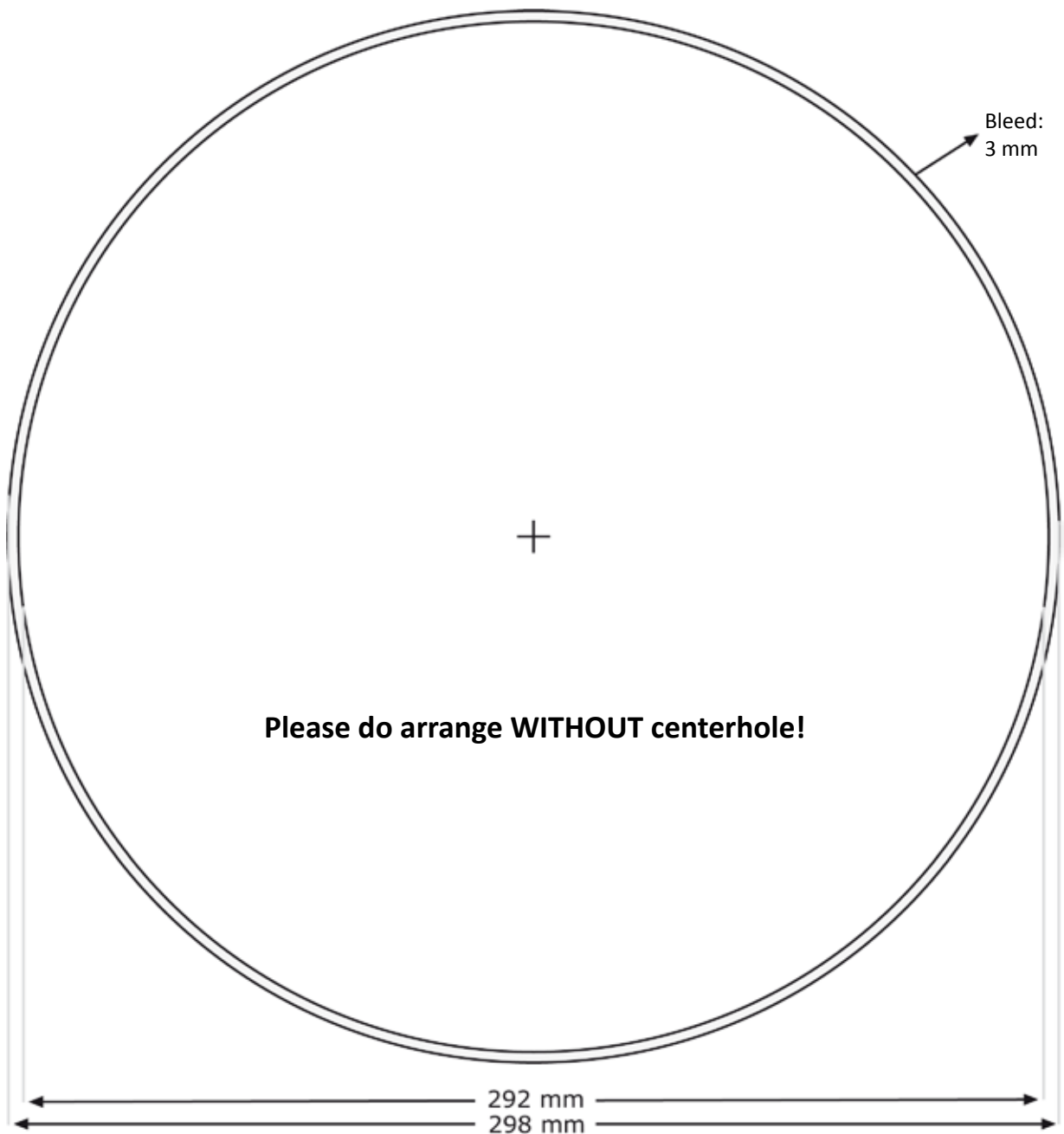
Specifications Picture LP 10"



Format: 242 x 242 mm
Blees: 3 mm

Documentsize: 242 x 242 mm
Incl. Bleed: 248 x 248 mm
PDF-Size: 248 x 248 mm

Specifications Picture LP 12"



Format: 292 x 292 mm
Blees: 3 mm

Documentsize: 292 x 292 mm
Incl. Bleed: 298 x 298 mm
PDF-Size: 298 x 298 mm

Contact

handle with care
Prenzlauer Allee 193
10405 Berlin
Germany

Tel: +49 (0)30 400430-0
Tel: +49 (0)30 400430-23 (Grafik)

Email: artwork@handlewithcare.de
grafik@handlewithcare.de (Grafik)

FTP Server: <ftp://hwcftp.dyndns.org> - Please ask for an account!