

From the following documents you will be able to obtain the technical information necessary for the graphic design of each single printing component. The layout in the way you send it to us is expected to be ready for direct processing without any further correcting.

A delivery of data that is not according our specifications can delay your order and cause correction costs. Attention to these production guidelines should secure you the optimum results and simplify our cooperative work.

We can accept data from the following layout/image editing software and graphic programs:•

- Adobe®PhotoShop,
- Adobe®Indesign,
- Adobe®Illustrator,
- Macromedia®Freehand und
- Quark Xpres™ 6.5
- or printable pdfs as Adobe®Acrobat PDF.

For each one we work with the currently available program versions Mac OSX CS3 and CS4 and also Adobe® Acrobat 9. We always need from you:

- A montage of your data in a layout program in according the current specifications.
- All fonts that are used in the document inasmuch as they are not embedded or have been converted.
- All used images with a minimum resolution of:
 - line drawings: 1200 dpi
 - gray-scale images: 300 dpi
- maximum whole colour application: **350%** for any kind of cover cd-booklets cd-inlays; **400%** for cd-labels in offsetprinting.
- color profile: ISOcoated_v2_eci.icc

When delivering RGB Image data, during the necessary converting in the CMYK range of colours colour variation to the original image occurs. Therefore please save colour images in **CMYK** - modus as standard practice.

TIFF: Save TIFF Image data without compression (LZW or similar)

EPS: Binary coded

JPEG: Please save with maximum quality in CMYK modus

Please notice that Photoshop images must be mounted in an appropriate layout program. (In case we receive only Photoshop-files (tiffs jpgs...) we have to import those files into a layout program causing extra costs for you.) Take care that the positioning of your image data in the appropriate layout program has been done with paying attention to the necessary bleed (normally mm). The size of your montage page must be identical to the size of the format which has to be printed. Therefore mount your data without any additional white area, no crop- or registermarks. Printing area + bleed/trim = printed size = pdf-size. Upon request we can send you templates in various layout programs!

Line widths

All line widths must not lie under a minimum size.

- Positive print min. 0,10 mm
- Negative print min. 0,15 mm

Font sizes

Font size must not fall short of a minimum size.

- Positive print min. 4 pt
- Negative print min. 5 pt

Please note that with the use of serifs fonts and with particular font incisions, you must stay within the minimum line widths! Please only use postscript compatible font types.

For example, if we are printing the CD label using silk screen printing, the printing can only be successful in a maximum of 40's screen. This coarse screen means among other things that small fonts which are possibly made up of more than one scale colour may be hard to read. For that reason we recommend that CD label printing should generally be laid out in special/spot colours (Pantone Solid Coated or HKS). It is however possible to print in 4c offset in 70's screen. This recommended for 4c images!

Generally we produce your printed matter by CTP (computer to plate) and don't produce films anymore. That is why it is absolutely necessary that you **exactly stick to the specifications** of the **relevant pressing plant**. Our Graphics department will help you with any questions as refers this matter.

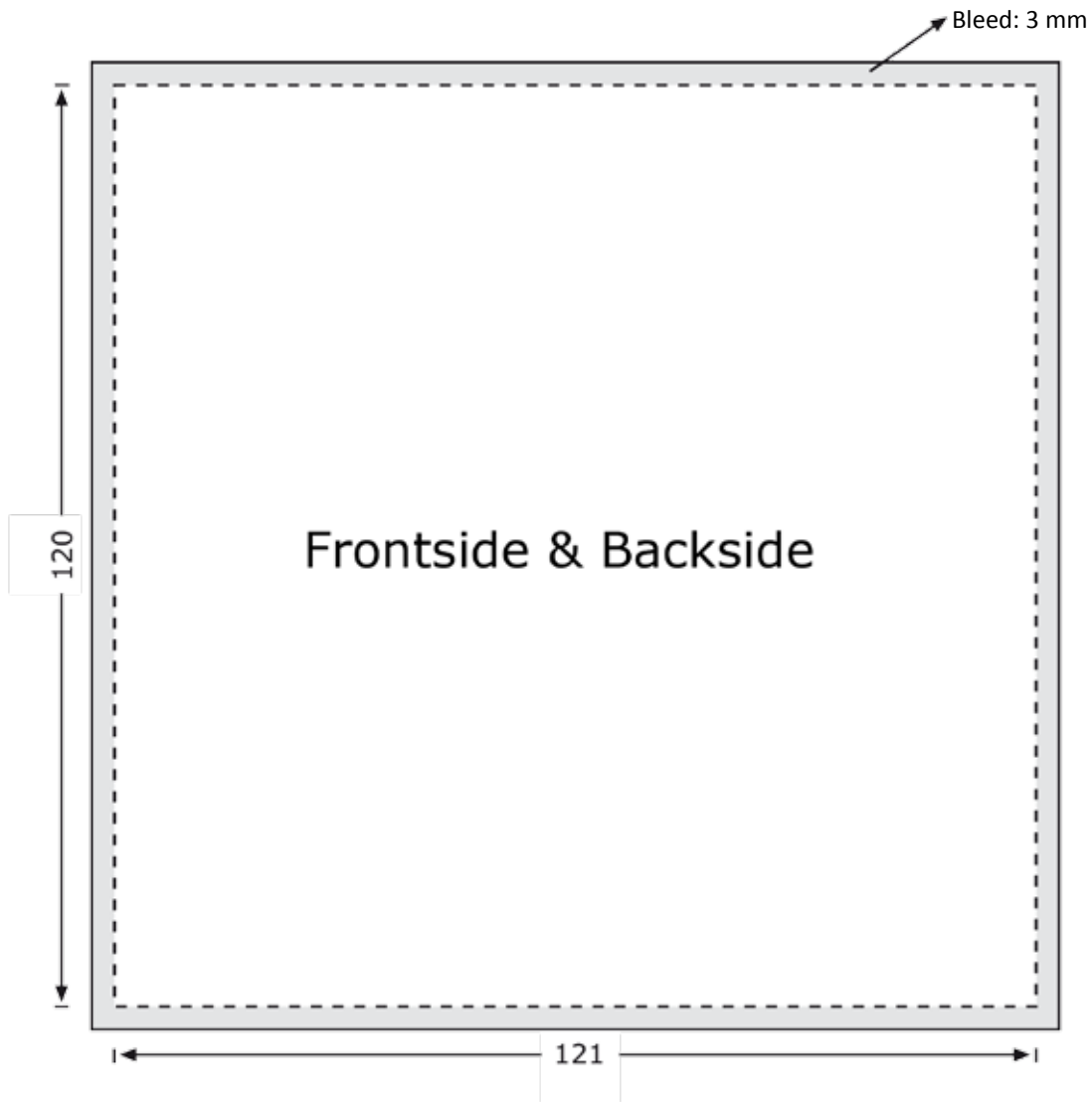
With delivery of compressed data, necessary intervention of the data that is to be developed, or by delivery of incomplete data, additional outlays will be calculated by the appropriate hourly rate.

In normal cases we receive from you the correct document according the specifications. After receiving your data, we check if it has been arranged according the specifications and generate high resolution PDF documents. These PDF's or the pdfs you send us, are then forwarded to the relevant pressing plant. Should it turn out in this process that problems need to be solved, you will receive a response, at which point you have the possibility of sending us new data or requesting that we do (if possible) the necessary work. The expenditure of time will then be shown separately in the invoice/bill. Sending printing files repeatedly to the printing agencies is connected with extra work for them and consequently extra costs for you.

In general the printing will be done by an industrial printing process connected with the usual color permissible limits according european ISO standard. To guarantee a certain color accuracy it's unalterable to sent digital proofs that follow the present valid FOGRA-standards/settings. It's possible that we do these digital proofs for you.

For security reasons you should only send copies of the data carrier and not the originals!

Specifications Covercard

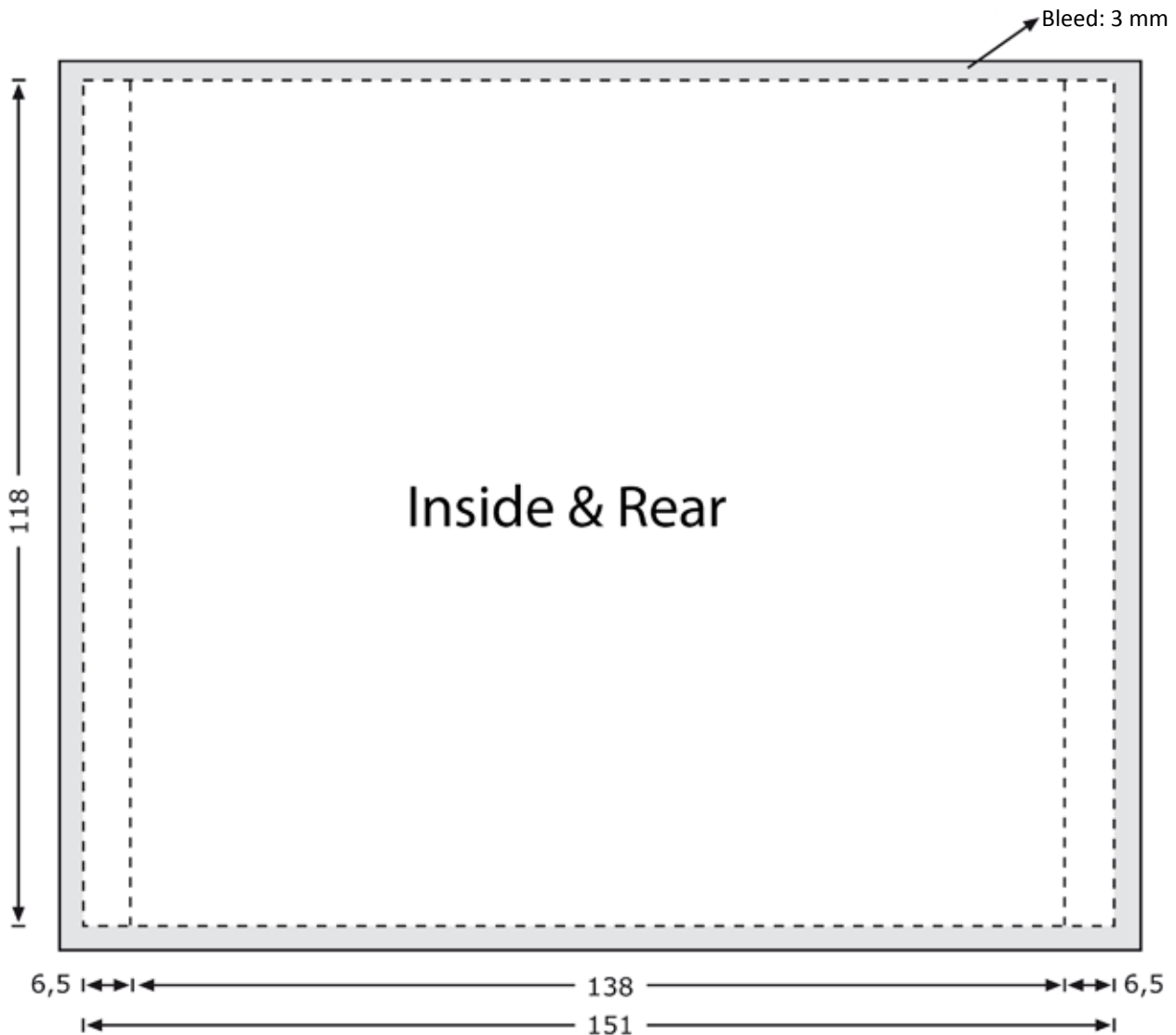


Format: 121 x 120 mm
Bleed: 3 mm
Pages: 2

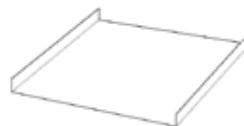


Documentsize: 121 x 120 mm
Incl. Bleed: 127 x 126 mm
PDF-Size: 127 x 126 mm

Specifications Inlaycard

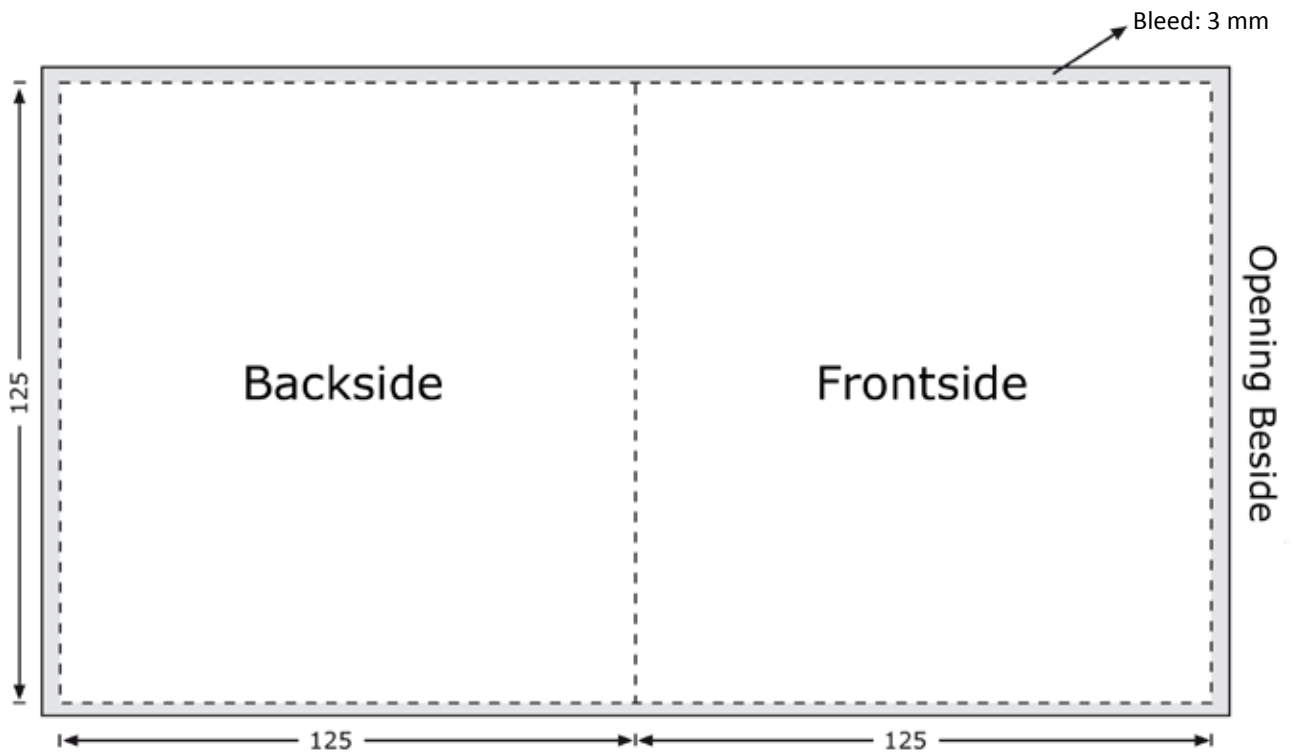


Format: 151 x 118 mm
Bleed: 3 mm
Pages: 2



Documentsize: 151 x 118 mm
Incl. Bleed: 157 x 124 mm
PDF-Size: 157 x 124 mm

Specifications Cardboard Wallet 1

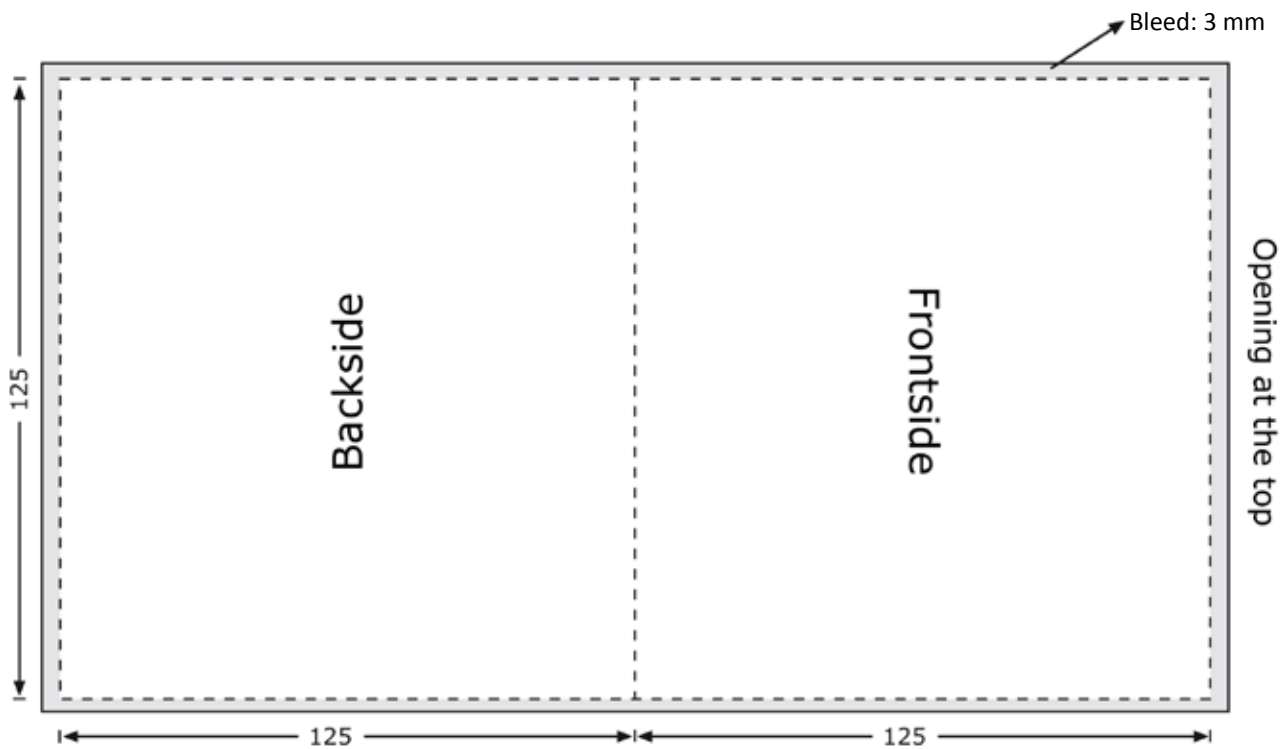


Format: 125 x 125 mm
Bleed: 3 mm



Documentsize: 250 x 125 mm
Incl. Bleed: 256 x 131 mm
PDF-Size: 256 x 131 mm

Specifications Cardboard Wallet 2

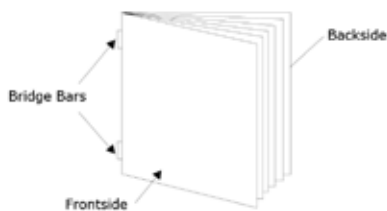
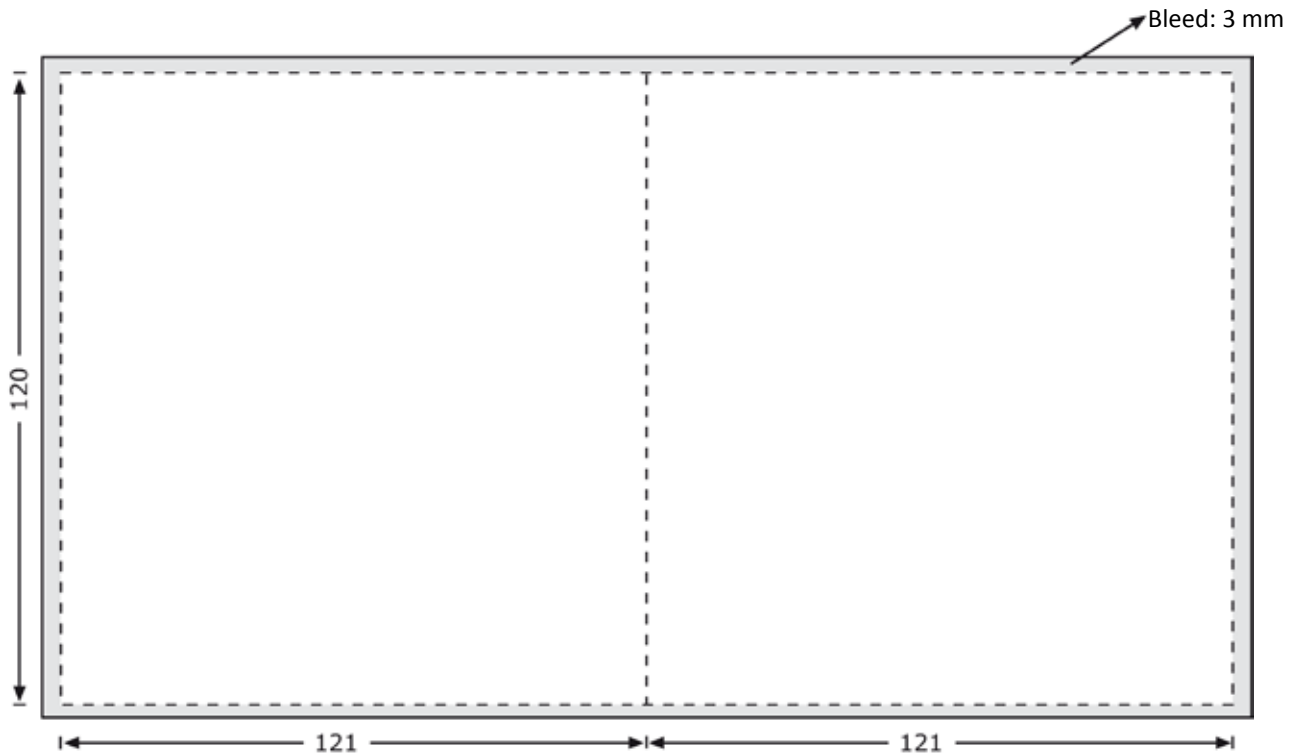


Format: 125 x 125 mm
Bleed: 3 mm



Document size: 250 x 125 mm
Incl. Bleed: 256 x 131 mm
PDF-Size: 256 x 131 mm

Specifications Booklet 4 - 36 Pages



Format: 242 x 120 mm

Bleed: 3 mm

Pages: 4 - 36

Document size: 242 x 120 mm

Incl. Bleed: 248 x 126 mm

PDF-Size: 248 x 126 mm

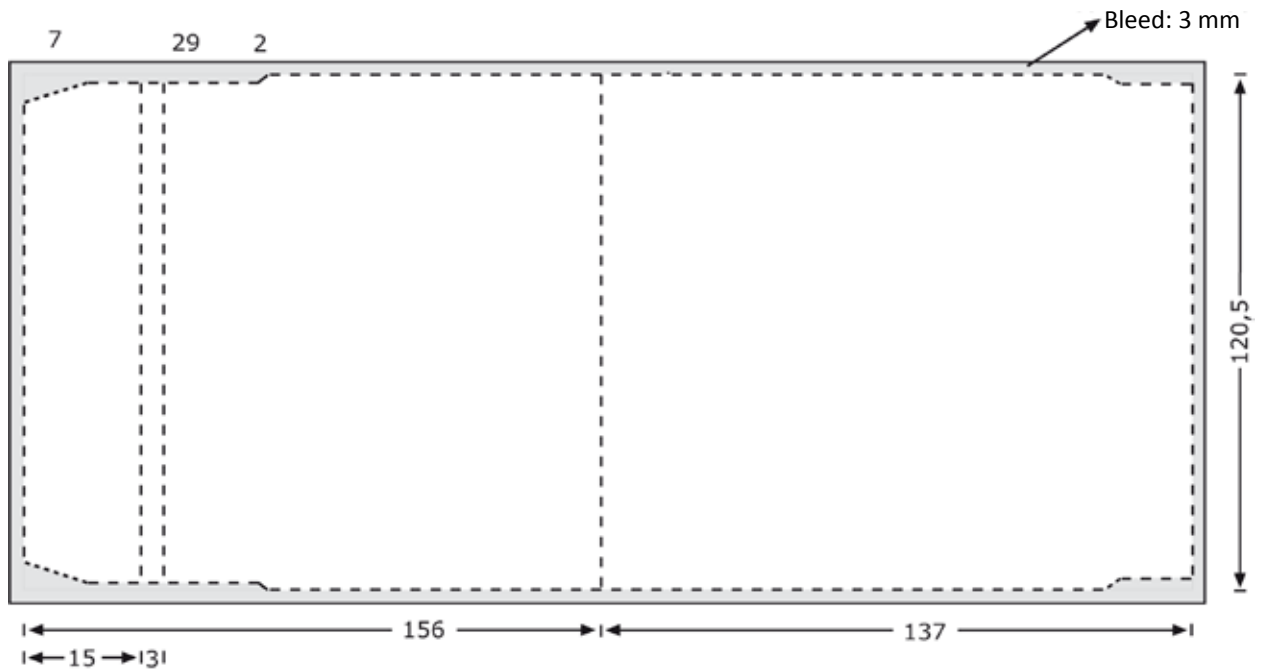
PDF-Size: 127 x 126 mm

(single-pages, bleed all around)

Example:
Booklet 12 Pages



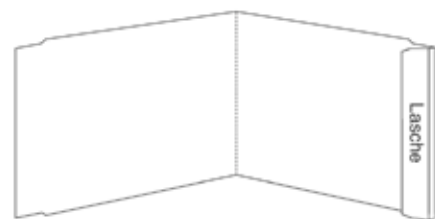
Specifications Inlaycard 5''



Format: 293 x 120,5 mm

Bleed: 3 mm

Pages: 1

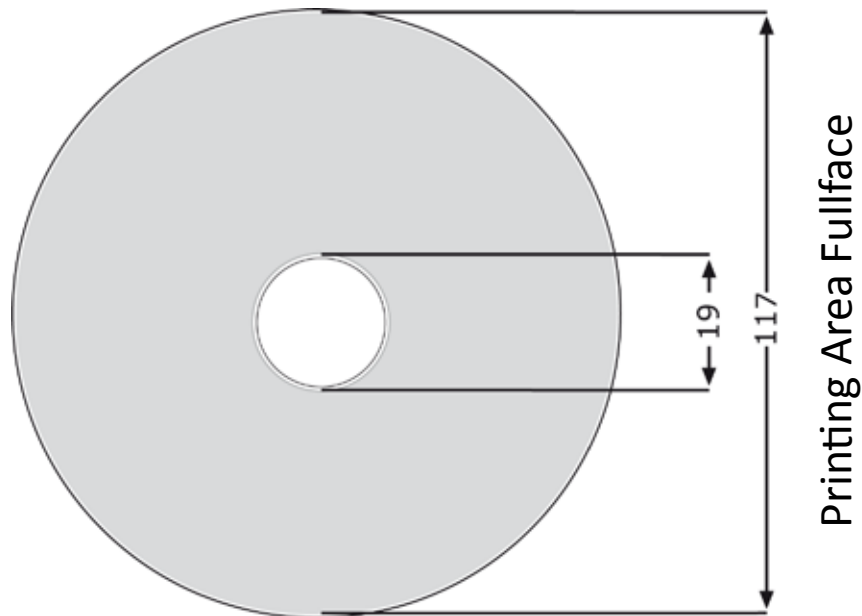


Documentsize: 293 x 120,5 mm

Incl. Bleed: 299 x 126,5 mm

PDF-Size: 299 x 126,5 mm

Specifications CD Body (Standard)



Please do NOT arrange the inner circles/printing area!

Format: 117 x 117 mm

Bleed: 0 mm

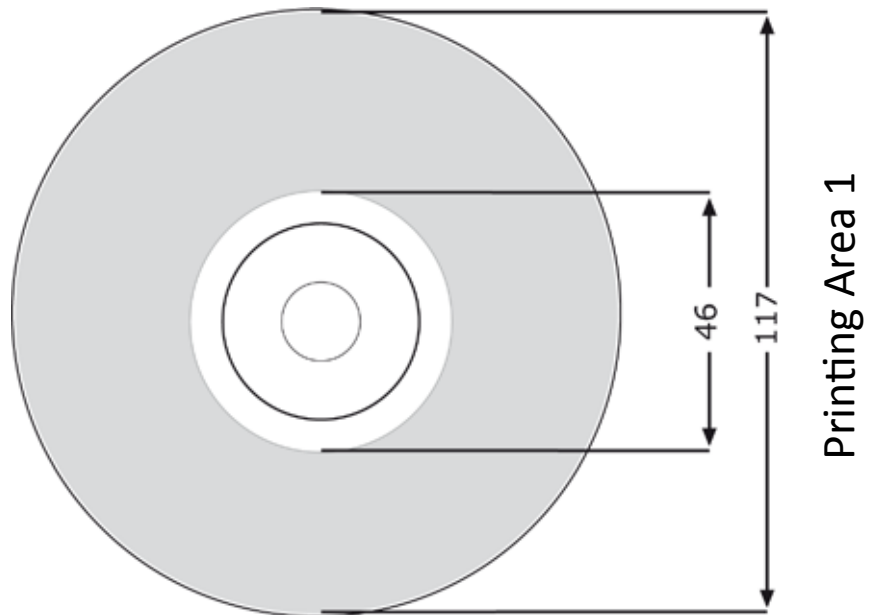
Printing Area: \emptyset 19 - 117 mm

Document size: 117 x 117 mm

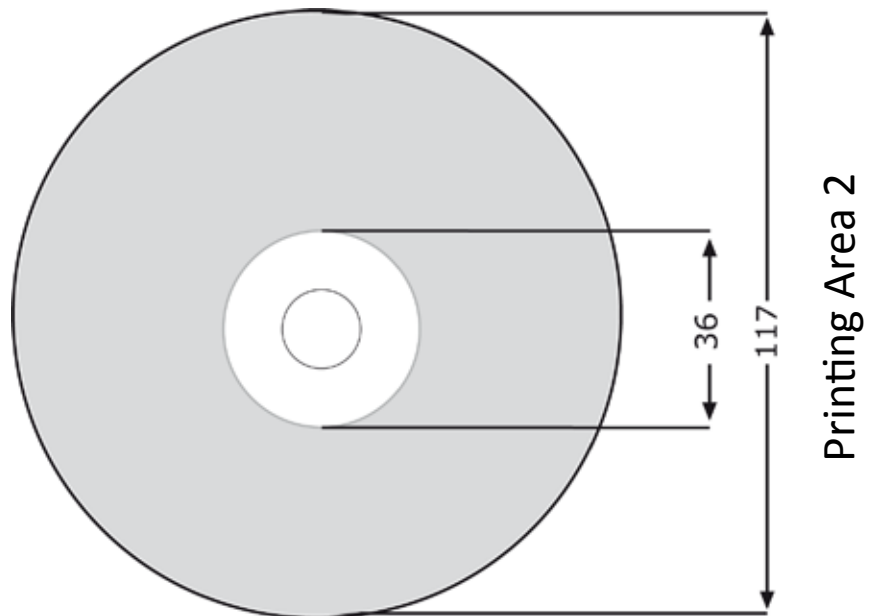
No Bleed

PDF-Size: 117 x 117 mm

Specifications CD Body



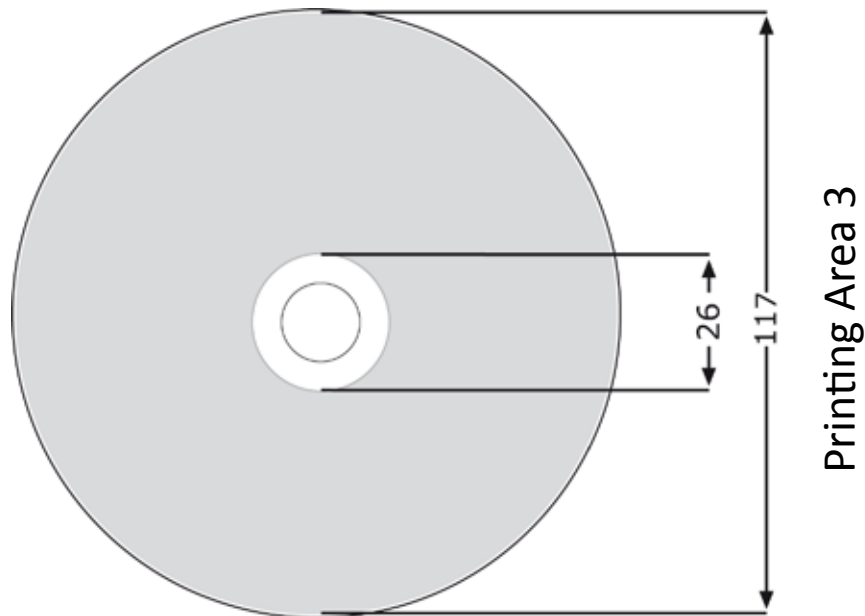
Please do NOT arrange the inner circles/printing area!



Format: 117 x 117 mm
Bleed: 0 mm
Printig Area: \varnothing 36/46 - 117 mm

Documentsize: 117 x 117 mm
No Bleed
PDF-Size: 117 x 117 mm

Specifications CD Body



Please do NOT arrange the inner circles/printing area!

Format: 117 x 117 mm

Bleed: 0 mm

Printing Area: \varnothing 26 - 117 mm

Document size: 117 x 117 mm

No Bleed

PDF-Size: 117 x 117 mm

Contact:

handle with care
Prenzlauer Allee 193
10405 Berlin

Tel: +49 (0)30 400430-30
Tel: +49 (0)30 400430-23 (Contact Print)
Email: artwork@handlewithcare.de
grafik@handlewithcare.de

FTP-Server: <ftp://hwcftp.dyndns.org> - Please ask for an account!